

Traffic Accident Prediction In Hamburg

Accident Prophet



OUR TEAM



Felix Geyer

Mathematician

<https://www.linkedin.com/in/felix-geyer-ds/>



Andreas Kunzendorf

Biochemist

www.linkedin.com/in/andreaskunzendorf/



Carolina Körber

Chemical Engineer

www.linkedin.com/in/carolina-mergulhao-korber



Till Meineke

Biochemist & Data Analyst

<https://github.com/TillMeineke>

“1.35 million individuals lose their lives in traffic accidents every year.”

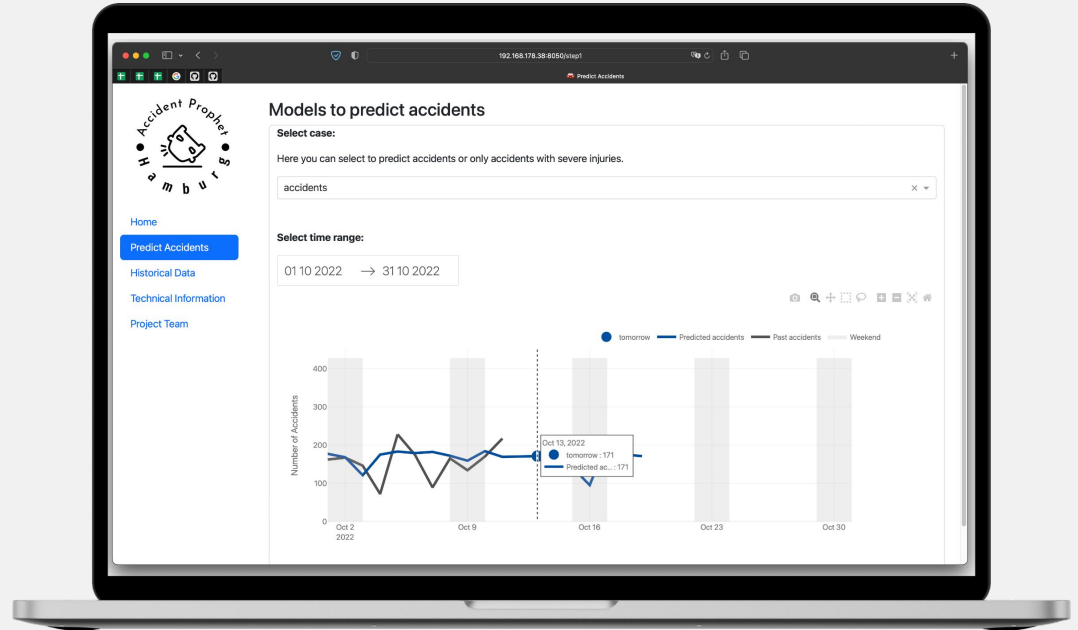
” —**World Health Organization (WHO)**

“Traffic crashes totalled EUR 31.5 billion for German society in 2020.”

” —**ROAD SAFETY REPORT
2021**

MOTIVATION & PRODUCT

- ◆ Predict traffic accidents in Hamburg
- ◆ Resource planning for police and hospitals
- ◆ Reduce time for police to arrive on accident



DATA SOURCES



FragDenStaat

Accidents Data

- ◆ 2009 - 2022
- ◆ Accidents: 909273
- ◆ Features : 47
- ◆ Date, time, location, age, no. injured



Meteostat

Weather Data

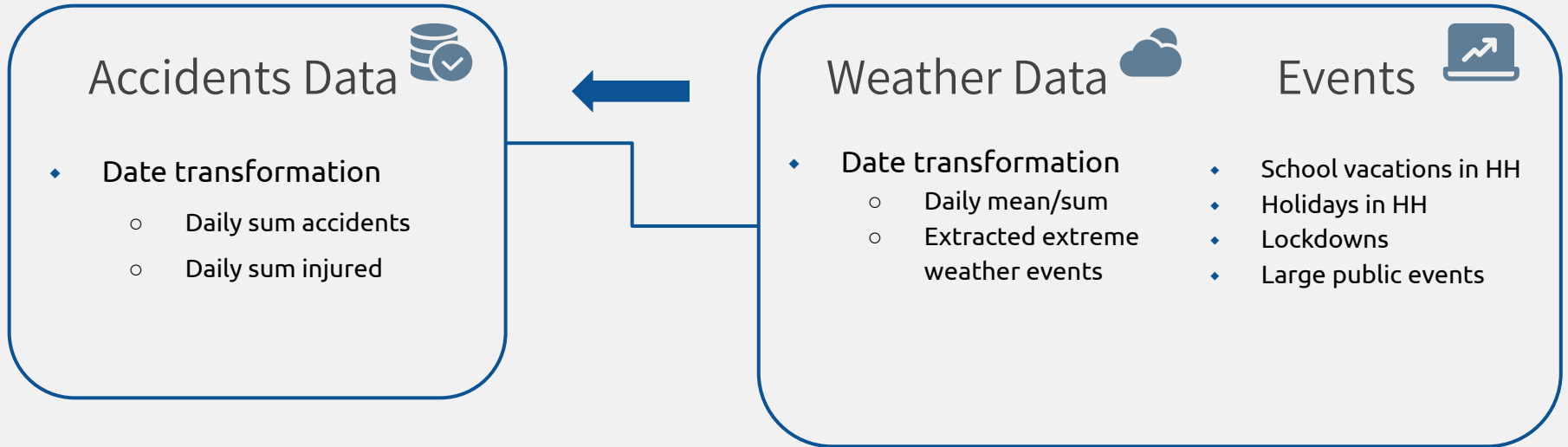
- ◆ Numerical weather data
- ◆ Weather phenomena



Events

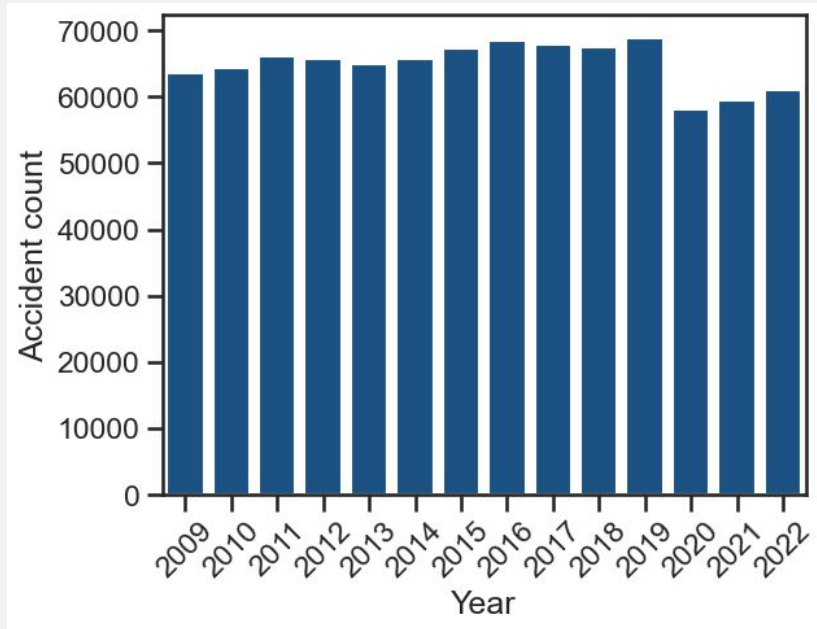
- ◆ School vacations in HH
- ◆ Holidays in HH
- ◆ Large public events

DATA ENGINEERING



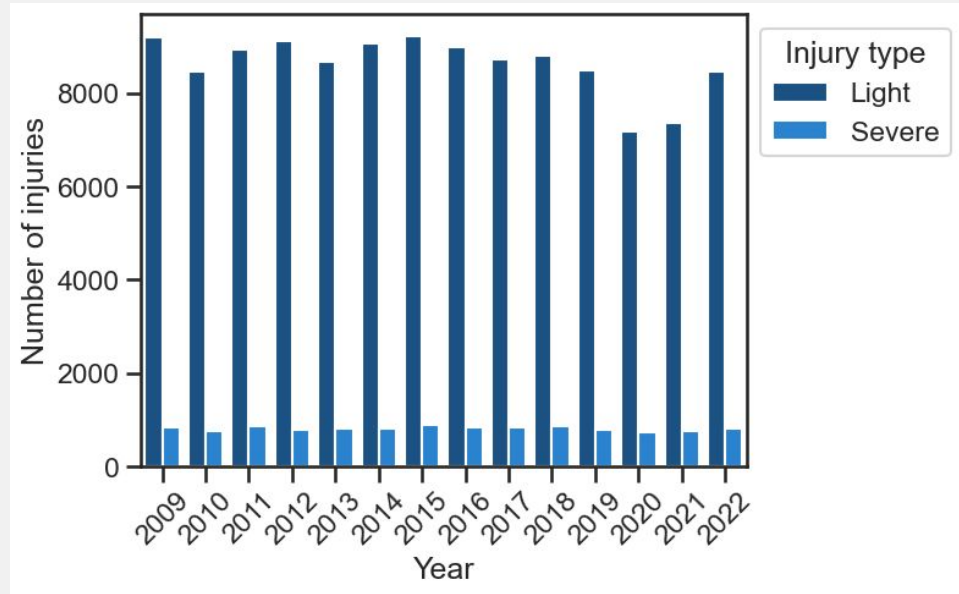
TRAFFIC ACCIDENTS **PER YEAR**

+65000
ACCIDENTS
in Hamburg



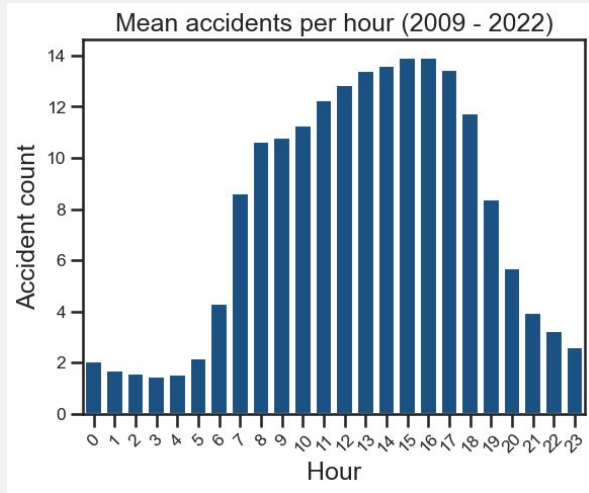
TRAFFIC INJURIES **PER YEAR**

+8500 light
+800 severe
INJURIES
in Hamburg

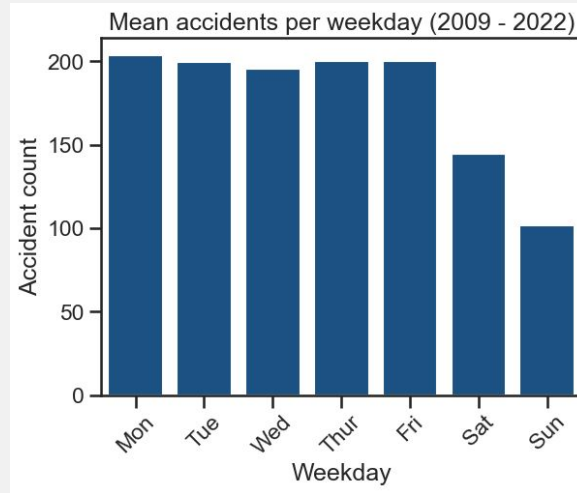


TIME PATTERNS

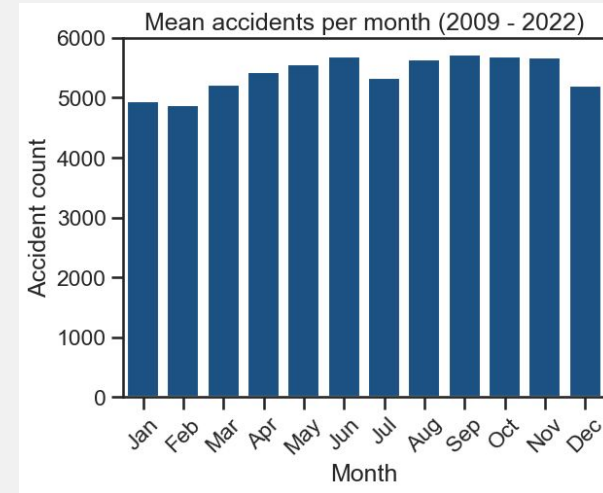
Hour



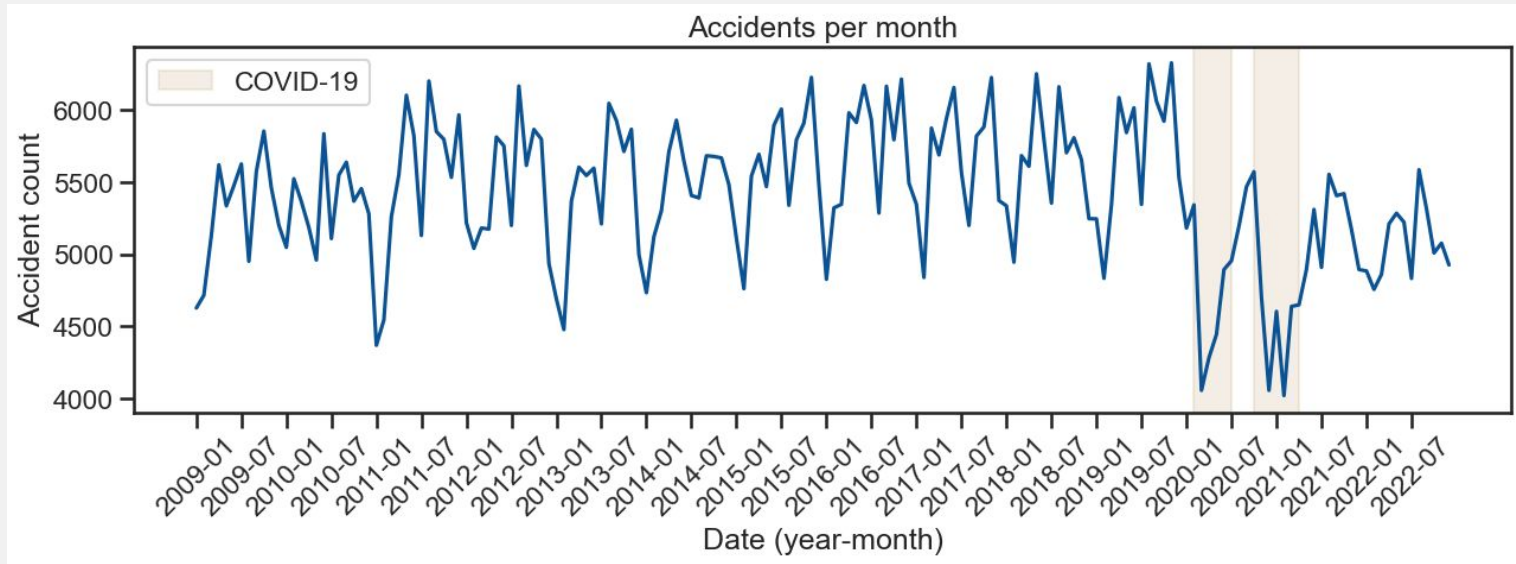
Weekday



Month



COVID-19 **IMPACT**



PREDICTION MODELS



SARIMAX

- ◆ Classic time-series model
- ◆ Autoregressive component (AR)
- ◆ Moving average (MA)
- ◆ Seasonality
- ◆ Additional features



Prophet

- ◆ Time-series model
- ◆ Additive regression model
- ◆ Trend, Seasonality, Holidays
- ◆ Additional features



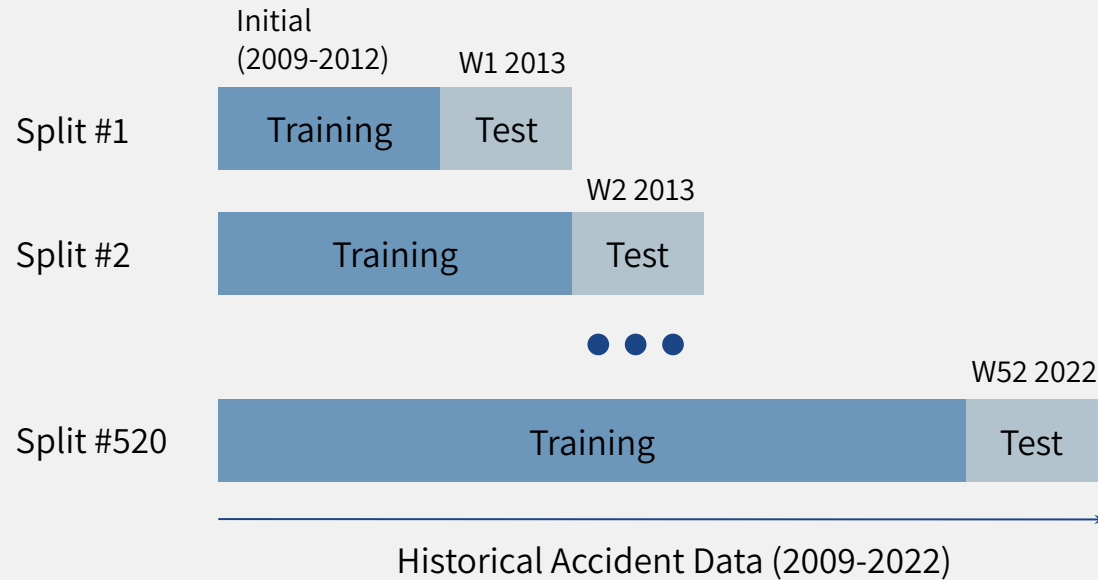
LightGBM

LightGBM

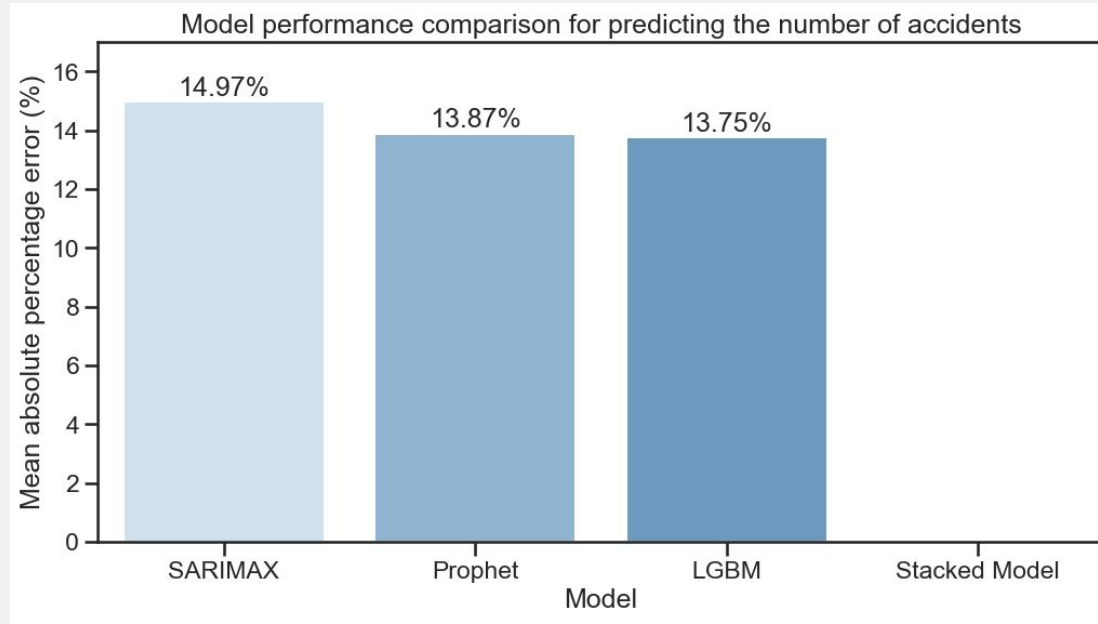
- ◆ Gradient boosting model
- ◆ Tree based learning

EVALUATION METHOD

- ◆ Cross validation with weekly splits
- ◆ Mean absolute percentage error (MAPE) as metric



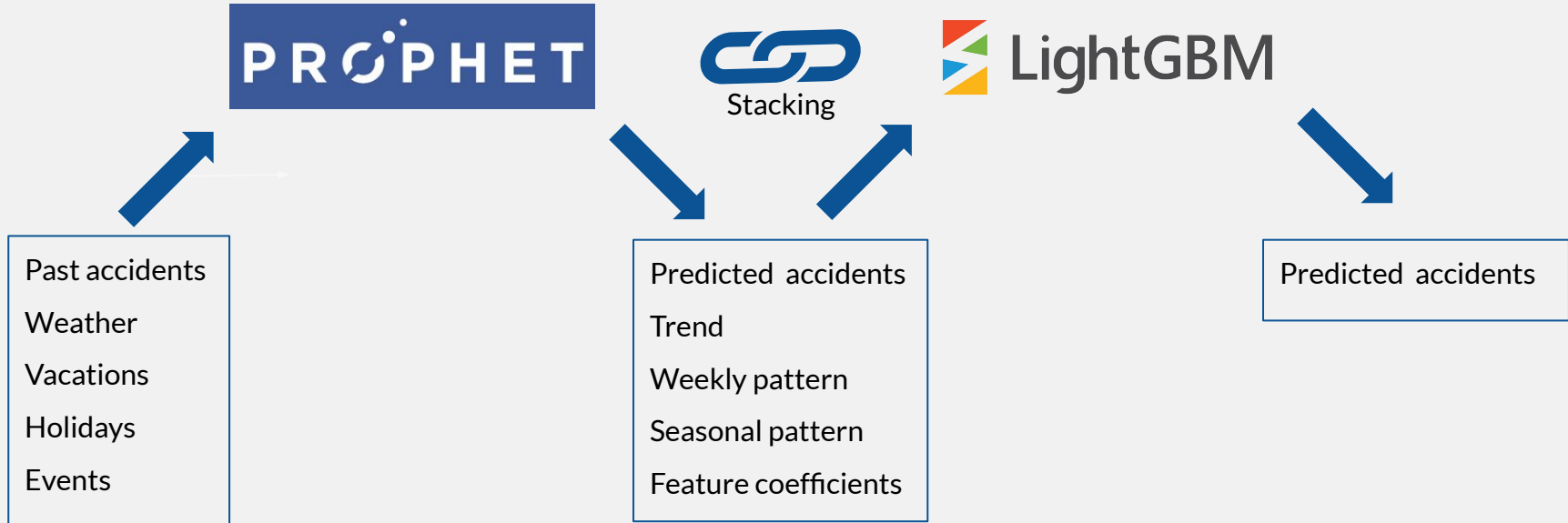
MODEL EVALUATION



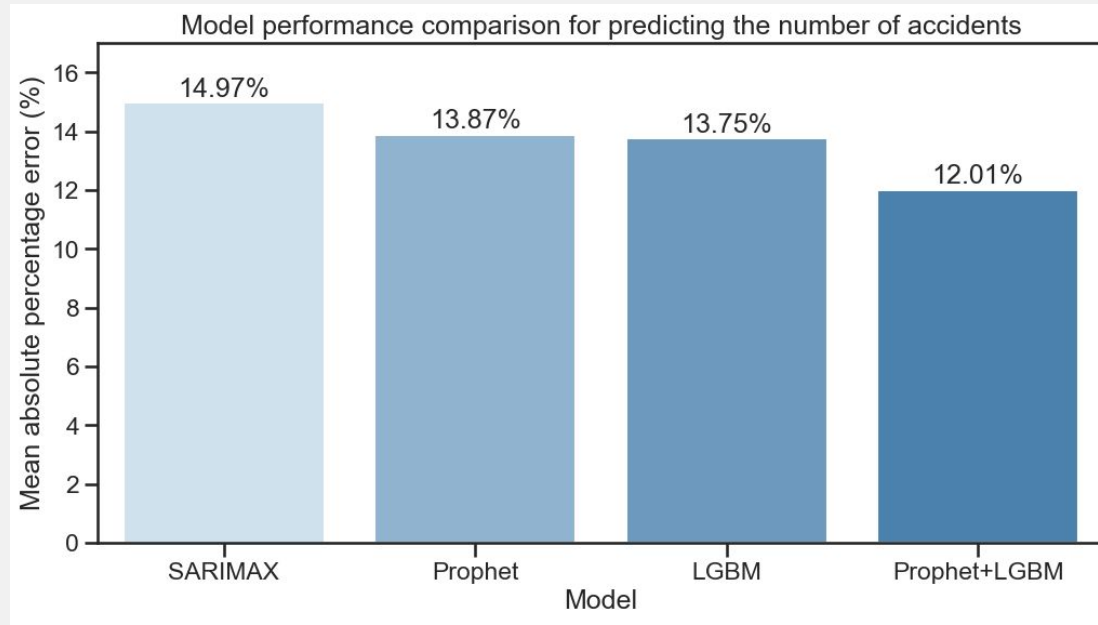
FORECAST **MODEL**



FORECAST MODEL



MODEL EVALUATION



Tuning and **EVALUATION**

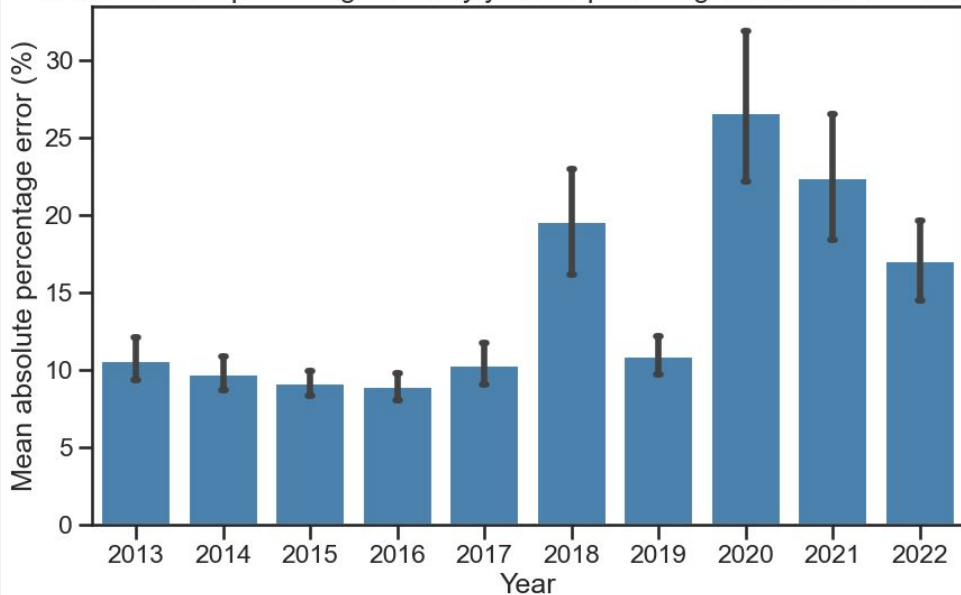
Tuning

- ◆ Best regressor combinations chosen by cross validation
- ◆ Hyperparameter tuning

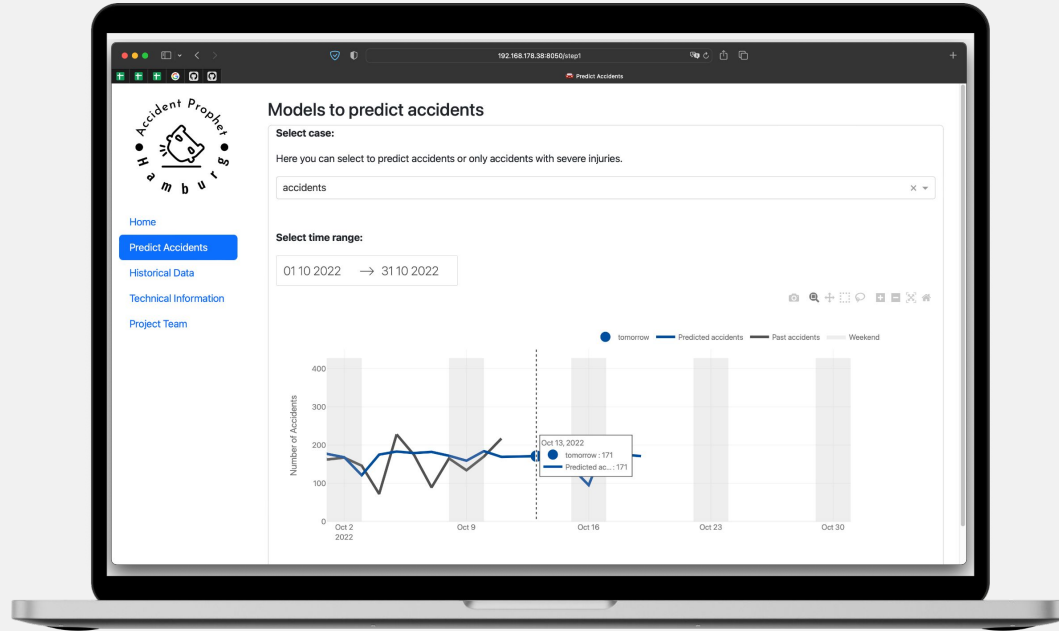
Evaluation

- ◆ Only 12% MAPE for predicting the number of daily accidents
- ◆ Significant drop of prediction quality during Covid-pandemic
- ◆ 29.6% MAPE for predicting the number of daily injured people

Mean absolute percentage error by year for predicting the number of accidents



DASHBOARD **LIVE DEMO**



FUTURE **WORK**



Implement real-time data
(weather, traffic etc.)



Improve model,
try more sophisticated models



User feedback



Monitoring of dashboard effect

THANKS!

Do you have any questions?



Felix Geyer

Mathematician

<https://www.linkedin.com/in/felix-geyer-ds/>



Andreas Kunzendorf

Biochemist

www.linkedin.com/in/andreaskunzendorf/



Carolina Körber

Chemical Engineer

www.linkedin.com/in/carolina-mergulhao-korber



Till Meineke

Biochemist & Data Analyst

<https://github.com/TillMeineke>